



 KNIT | SKILL LEVEL: **EASY**

MEASUREMENTS

Approx 10 x 9¾" [25.5 x 25 cm].

GAUGE

20 sts and 26 rows = 4" [10 cm] in stocking stitch.

INSTRUCTIONS

Cast on 49 sts.

1st row: *K1. P1. Rep from * to last st. K1. Rep 1st row 4 times more.

6th row: (WS). K1. P1. K1. Purl to last 3 sts. K1. P1. K1.

7th row: K1. P1. K1. Knit to last 3 sts. K1. P1. K1.

Rep last 2 rows until work from beg measures 3¼" [8.5 cm], ending on a WS.

Place chart: 1st row: (RS). K1. P1. K2. Work 1st row of Chart. K2. P1. K1.

2nd row: (K1. P1.) twice. Work 2nd row of Chart. (P1. K1) twice.

Chart is now in position. Cont working until 23 rows of Chart have been completed.

Next row: K1. P1. K1. Purl to last 3 sts. K1. P1. K1.



Next row: K1. P1. Knit to last 2 sts. P1. K1.

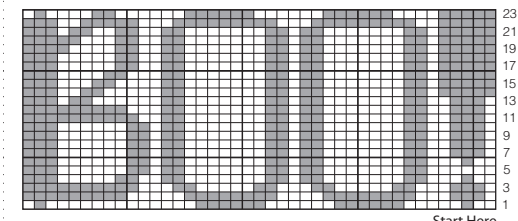
Rep last 2 rows until work from beg measures approx 8½" [21.5 cm] ending with a RS row.

Next row: *K1. P1. Rep from * to last st. K1.

Rep last row 4 times more. Cast off in pat.

Key

-  = Purl on RS rows. Knit on WS rows
-  = Knit on RS rows. Purl on WS rows.



MATERIALS

Lily® Sugar'n Cream® (2.5 oz/70 g ; 120 yds/109 m)
Sunshine (00073) **1 ball**

Size 4.5 mm (U.S. 7) knitting needles **or size needed to obtain gauge.**